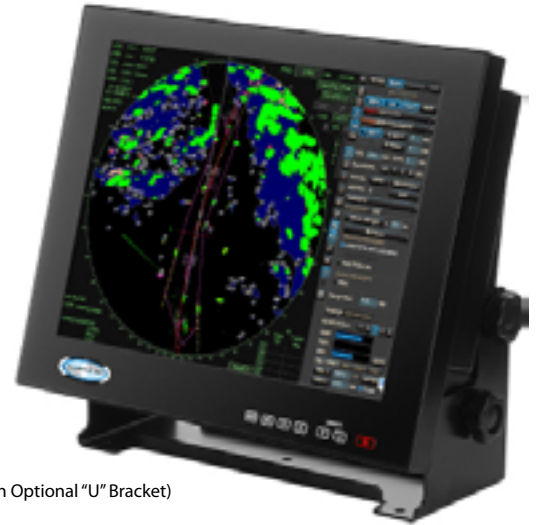




## Universal Marine Grade Waterproof Sunlight Readable LED Computer Display

# MPC-WPDxx

The WPD Universal Series is a breakthrough in marine grade flat panel Active Matrix LCD Monitor designs, offering economical yet extremely rugged sunlight readable displays that are fully sealed from water, oil, dirt and other contaminants. The WPD Series is available in 8.4", 10.4", 12.1", 15.0", 17" and 19" sizes and is suitable for use in virtually any environment. The LED backlight delivers up to 1,000 nits of full sunlight readability, yet dims to ~ 1 nit for use on moonless nights. The front mounted video display and dimming control adjusts the display qualities and brightness from max to super-dim for optimal operator viewing clarity and comfort in any lighting condition. The WPD Series connects to any standard PC through the DVI and/or VGA outputs. The WPD supports Picture-in-Picture so that two separate inputs can be seen simultaneously. The WPD receives its video signals through a sealed 4 ft. cable. The native resolution is SVGA (800x600) for the 8.4", XGA (1024x768) for the 10.4", 12.1" and 15", and SXGA (1280x1024) for the 17" and 19". In any case, the WPD will auto-scale any standard 4:3 input resolution to fit full screen. The optional touch screen will operate perfectly even in the wettest conditions. The normal operating temperature range is -30 to 70°C (-22 to 158°F) without heaters. The precision milled aluminum front case is super rugged and suitable for flush or optional "U" Bracket for surface mounting, or optional VESA arm mounting. Common applications include primary display or repeater from a computer, chart plotter, blackbox radar or sounder or weather computer and can be remotely located in an open flybridge, nav station or fishing tower, or mounted on the bridge or in the cockpit of a sailboat.



(Shown with Optional "U" Bracket)

### Standard Features

- **Completely Sealed Case Rated IP67 Watertight.**
- **8.4", 10.4", 12.1", 15", 17", 19" Color TFT AMLCD.**
- **SVGA, XGA or SXGA Native Resolution.**
- **~1,000 nit Sunlight Viewable Dims to ~1 nit.**
- **High Contrast for Excellent Viewability.**
- **RGB and/or DVI Video from any Computer.**
- **Picture-in-Picture from Different Sources.**
- **Exceptional Temperature Range: -20 to +70°C.**
- **Thin Profile Black Anodized Aluminum Case.**
- **Flush, Optional "U" Bracket or VESA ARM Mount.**
- **Powered from 10-38 VDC or 120/240 VAC.**
- **Anti-Reflective Glass or Optional Touchscreen.**
- **10 Ft. Power and 4ft. Video Cables Included.**



Universal Marine Grade  
Waterproof Sunlight Readable  
LED Computer Display

# MPC-WPDxx

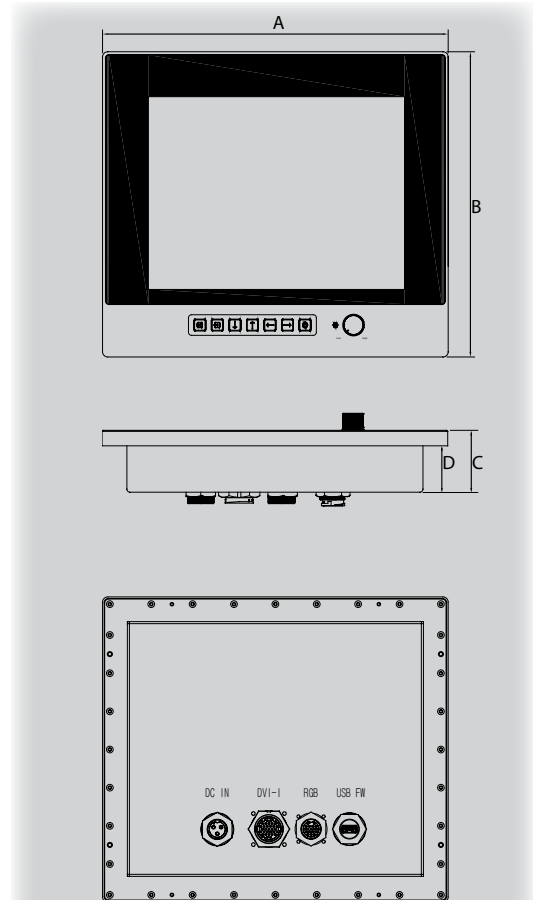
## Specifications

- **Display** AM-TFT LCD: 8.4" - 800x600, 10.4", 12.1", 15.0" - 1024x768  
17", 19" - 1280x1024
- **Brightness** 1,000 nits LCD Backlight, Dimmable to ~1 for Night Operation
- **Video Input** DVI-D and RGB VGA Video, 4:3 Autoscaling
- **Touchscreen (Optional)** Analog Resistive, 1024x1024 Resolution, Serial Cable Included
- **Cables** Power - 10 Ft. (3m.) Sealed Cable, Flying Leads (DC only)  
Video - 4 Ft. (1.3m.) Sealed Cable, Mini-DIN DB-15 Male  
Digital - 4 Ft. (1.3m.) Sealed Cable, DVI-D Male
- **Connectors** Circular Sealed Screw-on Connectors
- **Housing** NEMA 6P/IP67 Rated Outdoor Weatherproof and Waterproof  
Main Case Black Anodized/Clear Coated Milled Aluminum Billet  
Powder Coated Aluminum Rear, All Stainless Steel Hardware
- **Mounting** Flush or Optional "U" Bracket Surface Mount or VESA Mount
- **Weight**

8.4"	3.0 kg / 6.6 lbs.
10.4"	3.5 kg / 7.7 lbs.
12.1"	4.2 kg / 9.23 lbs.
15"	5.0 kg / 11 lbs.
17"	6.1 kg / 13.4 lbs.
19"	7.2 kg / 15.8 lbs.
- **Power** Min: 6 watts Max: 8.4" - 20w, 10.4" - 25w, 12.1" - 25 w,  
15" - 30w, 17" - 40w, 19" - 48w
- **Environmental**

<b>Operating</b>	<b>Non-Operating</b>
Temperature (Air Ambient) -30°C to 70°C (-22 to 158°F)	-40°C to 75°C (-40°F to 167°F)
Relative Humidity 0% to 100%	
Shock 50 G	50 G
Vibration (@ 5-500 Hz sine sweep) 5.8 G	5.8 G
- **Electrical**

Input 10-38 VDC Internal	120/240 VAC (External Adapter)
Frequency DC Input	45 – 75 Hz
- **MTBF (approx.)** 50,000 Hrs.
- **Standards** CE, FCC Class A, Part 15



Dim Model	A	B	C	D
WPD08	10.20" 259mm	9.02" 229mm	2.36" 60mm	1.81" 46mm
WPD10	11.10" 282mm	10.36" 263mm	2.36" 60mm	1.81" 46mm
WPD12	13.19" 335mm	11.65" 296mm	2.36" 60mm	1.81" 46mm
WPD15	15.12" 384mm	13.39" 340mm	2.36" 60mm	1.81" 46mm
WPD17	16.34" 415mm	15.08" 383mm	2.36" 60mm	1.81" 46mm
WPD19	17.80" 452mm	16.18" 411mm	2.36" 60mm	1.81" 46mm