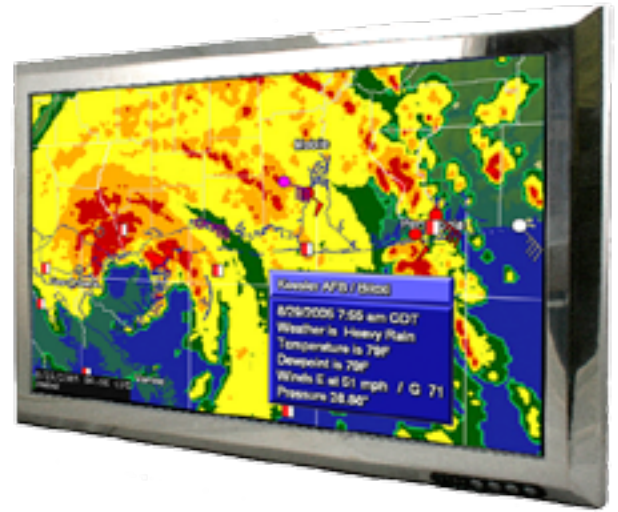




Marine Grade Fanless Splashproof
22" W Touchscreen
Integrated Computer/ Monitor

MPC-SPC22W

The MPC-SPC22W is a marine grade flat panel Active Matrix LCD Monitor combined with an Intel QuadCore Atom Mobile Processor and is designed for rugged use on or off bridge in semi-protected areas. The 22" WSXGA (1680x1050) LCD utilizes LED technology to enhance viewing in daylight. The MPC-SPC22W is fully sealed to IP65 in the front and rear with waterproof connectors. It comes standard with a waterproof touch screen that is fully operational even when wet. The MPC-SPC22W utilizes an ultra-low wattage 1.91 GHz. Intel QuadCore Atom E3845 mobile processor for cool operation and high performance. It comes standard with a 300GB hard drive, (or 128GB SSD) 2GB RAM, Ethernet, 3-USBs, 1 - RS-232 COM. The MPC-SPC22W is available with Windows7 Pro, Win10 or Linux Fedora. The normal operating temperature range is 0 to +50°C (-20 to 60°C with Solid State Hard Drive) making it suitable for use in almost any climate without special conditioning. The anti-corrosion stainless steel case is designed for use with any standard VESA mount. Common applications include electronic chart plotter, virtual instrumentation, sounder, operator interface or as a weather computer. The display can be oriented in either landscape or portrait mode, and can also be used for digital signage applications in extreme environments. It is available with hard drive and memory upgrades and wireless LAN and Bluetooth.



Standard Features

- Sealed Stainless Steel Case Rated IP65 Splashproof.
- 22" WSXGA Color LCD, 300nit LED Backlight.
- Waterproof Touchscreen.
- 1.91 GHz. Ultra-Low Power Intel QuadCore CPU.
- 300GB Hard Drive (or 128GB SSD) upgradable.
- 2 GB DDR3 RAM (upgradable to 8 GB).
- Ethernet, 10/100/1000BaseT (Dual optional).
- Optional Wireless LAN 802.11 b/g/n.
- Windows7 Pro or Win10 or Linux Fedora.
- Exceptional Temperature Range: -20 to +60°C.
- Standard Flush Bezel for Console Mounting.
- Optional VESA Mount, Optional 1,000 nit Backlight.
- Powered from 12 or 24 VDC nominal.
- 1 - RS-232 COM, 3 - USBs, 2x Sealed Speakers.





Marine Grade Fanless Splashproof
22"W Touchscreen
Integrated Computer/ Monitor

MPC-SPC22W

Specifications

Display	22" Active Matrix TFT LCD: WSXGA (1680x1050) Native Resolution
Brightness	300 nits low power LED Backlight, Optional 1,000 nit Sunlight Readable
Touchscreen	Analog Resistive Waterproof Touchscreen, 35 Million Activations
Processor/Chipset	Intel QuadCore Atom 1.91GHz. CPU E3845, Fanless Cooling
Hard Drive	300 GB Hard Drive (or 128GB SSD), Upgradable to 250 or 500GB or 1TB Solid State, or 500 GB or 1TB HD
Memory	2GB RAM, Upgradable to 8 GB, DDR3 1333MHz.
Networking	1 - 10/100/1000BaseT RJ-45 (Dual LAN optional)
Wireless	Optional Wireless LAN IEEE 802.11 b/g/n with Bluetooth
Inputs/Outputs	1 - RS-232, 3 - USB 2.0, 2 - Waterproof Speakers
Operating System	Windows10 Pro (64-bit) or Win10 Optional: Linux
Housing	IP65 Splashproof Sealed Stainless Steel Front, Rear Aluminum Heat Sink
Mounting	Standard VESA75/100 Mounting
Power	12-26 VDC, 60 watts (AC Adapter Optional)
Basic Dimensions	21.5" x14.88" x 2.72" (546mm.x 378mm.x69mm.) Cutout: 21" x 14.4" (534mm.x366mm.)
Weight	Net: 19.8 lb. (9 kg.) Shipping: 22 lb. (10 kg.)
Standards	CE, FCC Class A

