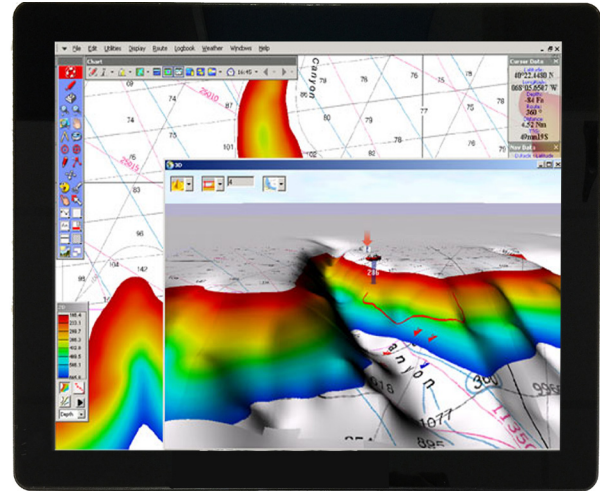




## Marine Grade Fanless 15" Touchscreen Integrated Computer/ Monitor

# MPC-OPC15

The MPC-OPC15 is a marine grade flat panel Active Matrix LCD Monitor combined with an Intel QuadCore Atom Mobile Processor and is designed for rugged use on or off bridge in semi-protected areas. The 15" XGA (1024x768) LCD utilizes LED technology to enhance viewing in daylight. The MPC-OPC15 front is fully sealed to IP65 in the front and IP42 in the rear. It comes standard with a waterproof touch screen that is fully operational even when wet. The MPC-OPC15 utilizes an ultra-low power 1.91 GHz. Intel Quad-Core Atom E3845 mobile processor for low wattage and high performance. It comes standard with a 250GB solid state drive, 4GB RAM, dual Ethernet, 4-USBs, and 2-RS232/422/485 COMs. Wi-fi and/or HDMI is optional. The MPC-OPC15 is available with Windows10 or Linux. The normal operating temperature range is -20 to +60°C making it suitable for use in almost any climate without special conditioning. The anti-corrosion case is designed for flushed-in mounting or can be used with a standard VESA mount. Common applications include electronic chart plotter, virtual instrumentation, sounder, operator interface or as a weather computer. It is available with hard drive and memory upgrades and wireless LAN.



### Standard Features

- Sealed Aluminum Front Rated IP65 Splashproof.
- 15" XGA Color LCD, 300nit LED Backlight.
- Waterproof Touchscreen.
- 1.91 GHz. Ultra-Low Power Intel Core Atom CPU.
- 250GB Solid State Drive, upgradable.
- 4 GB DDR3 RAM (upgradable to 8 GB).
- Dual Ethernet, 10/100/1000BaseT
- Optional Wireless LAN 802.11 b/g/n.
- Windows10 or Linux.
- Exceptional Temperature Range: -20 to +60°C.
- Standard Flush Bezel for Console Mounting.
- Optional VESA Mount.
- Powered from 12 or 24 VDC nominal.
- 2 - COMs, 4 - USBs, Optional HDMI Out, Audio.



[WWW.MARINEPC.COM](http://WWW.MARINEPC.COM)



Marine Grade Fanless  
15" Touchscreen  
Integrated Computer/ Monitor

# MPC-OPC15

## Specifications

Display	15" Active Matrix TFT LCD: XGA (1024x768) Native Resolution
Brightness	1,000 nits low power LED Backlight Dimmable to ~1 nit
Touchscreen	Analog Resistive Waterproof Touchscreen, 35 Million Activations
Processor/Chipset	Intel QuadCore Atom 1.91GHz. CPU E3845, Fanless Cooling
Hard Drive	250 GB Solid State Main Drive, Upgradable to 500GB or 1TB Solid State
Memory	4 GB RAM, Upgradable to 8 GB, DDR3L 1333MHz.
Networking	2 - 10/100/1000BaseT RJ-45
Wireless	Optional Wireless LAN IEEE 802.11 b/g/n
Inputs/Outputs	2 - RS-232/422/485, 2 - USB 2.0, 2 - USB 3.0, Optional1 - HDMI, Audio LineOut
Operating System	Windows10 64-bit, Optional: Linux
Housing	IP65 Splashproof Sealed Front, IP42 Aluminum Rear Case
Mounting	Flush Mount Bezel for Console Mounting Standard, Optional VESA100 Mounting
Power	12-26 VDC, 60 watts (AC Adapter Optional)
Basic Dimensions	14.8" x12.8" x 2.56" (375mm.x 325mm.x 65mm.) Cutout: 13.8" x 10.8" (350mm.x274mm.)
Weight	Net: 9.25 lb. (4.2 kg.) Shipping: 14 lb. (6.4 kg.)
Standards	CE, FCC Class A